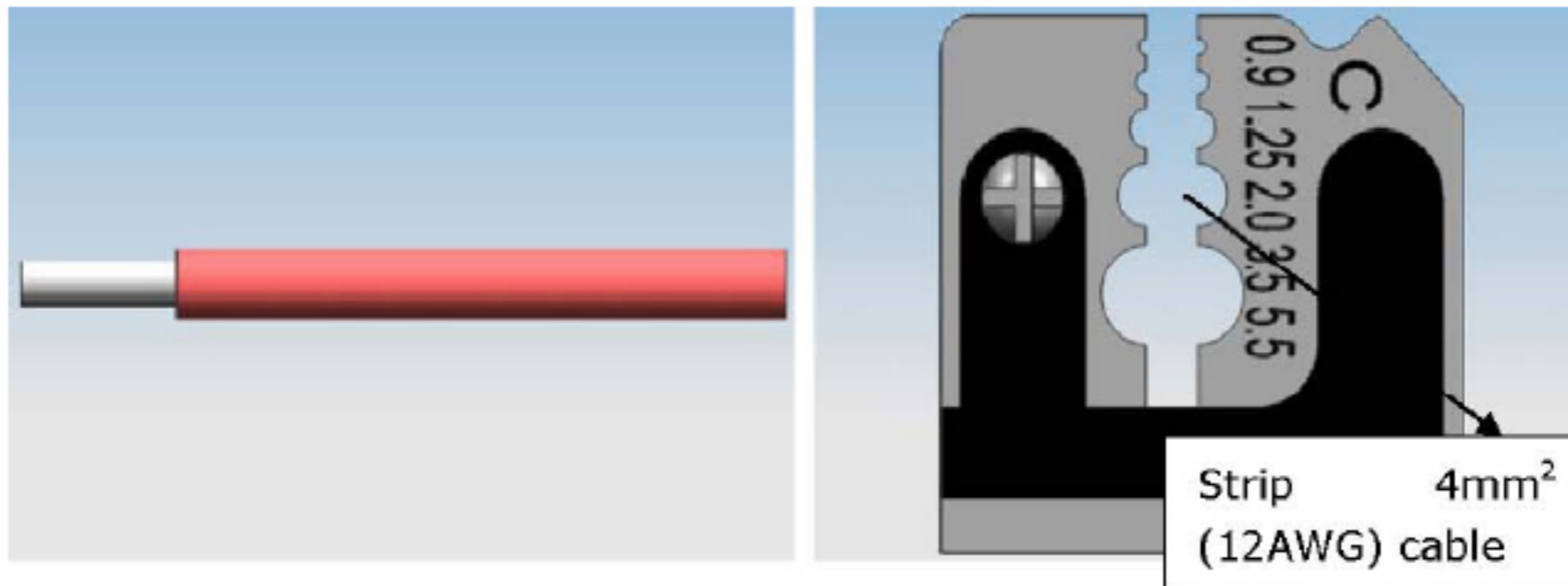


MC4 CONNECTORS

Users Manual

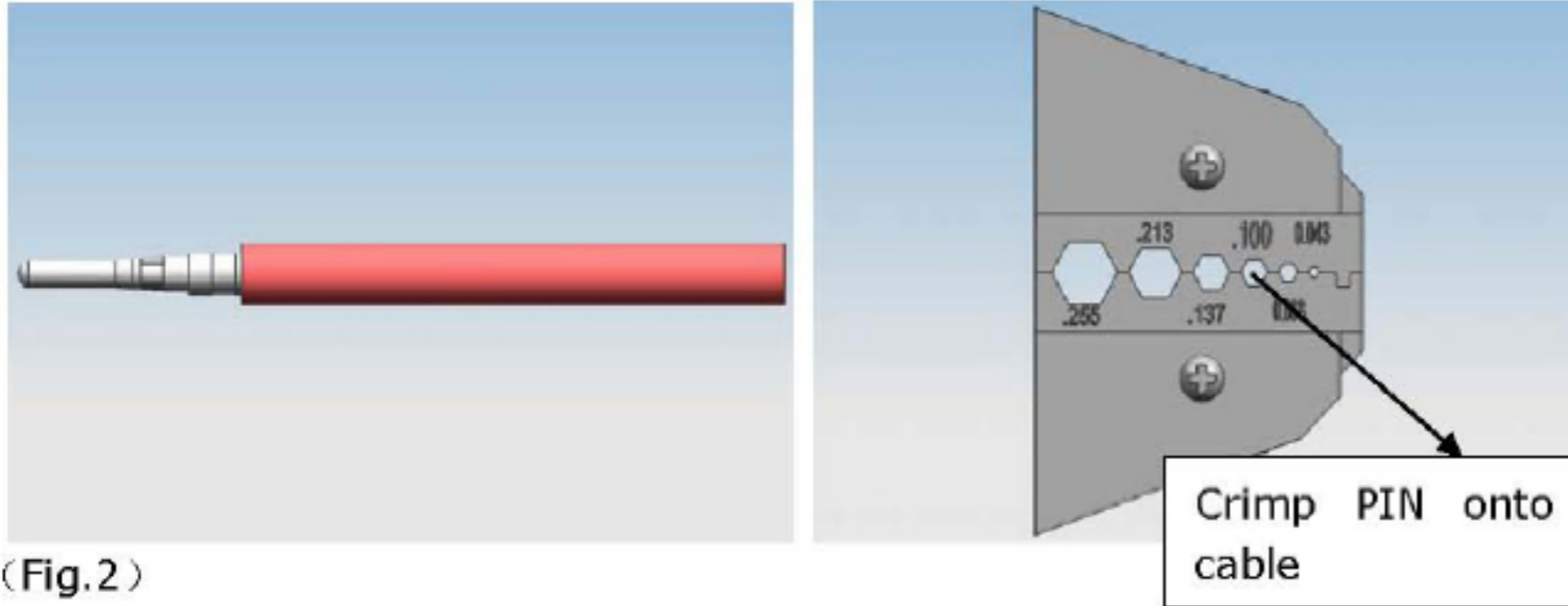
When assembling the connectors, the following sequence must be followed:

(1)strip the wire

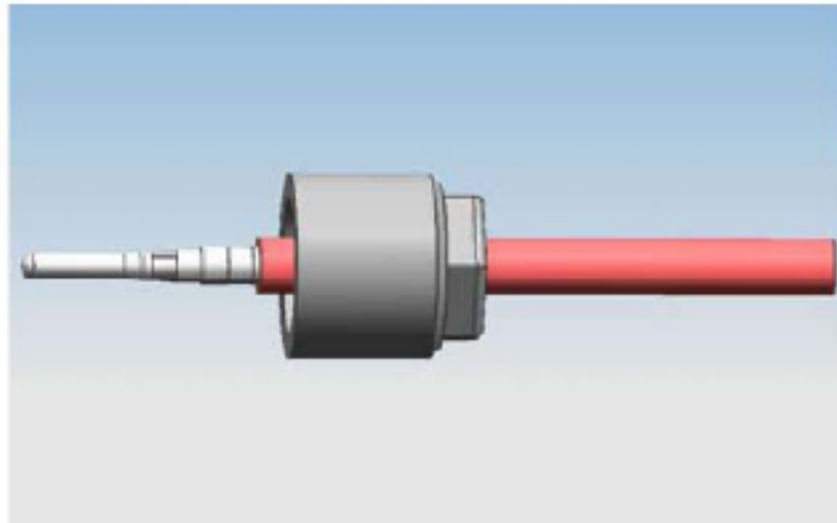


(Fig.1)

(2)insert the stripped wire into the wire crimp barrel until it stops. While holding the wire in place, squeeze tool handles together until ratchet releases

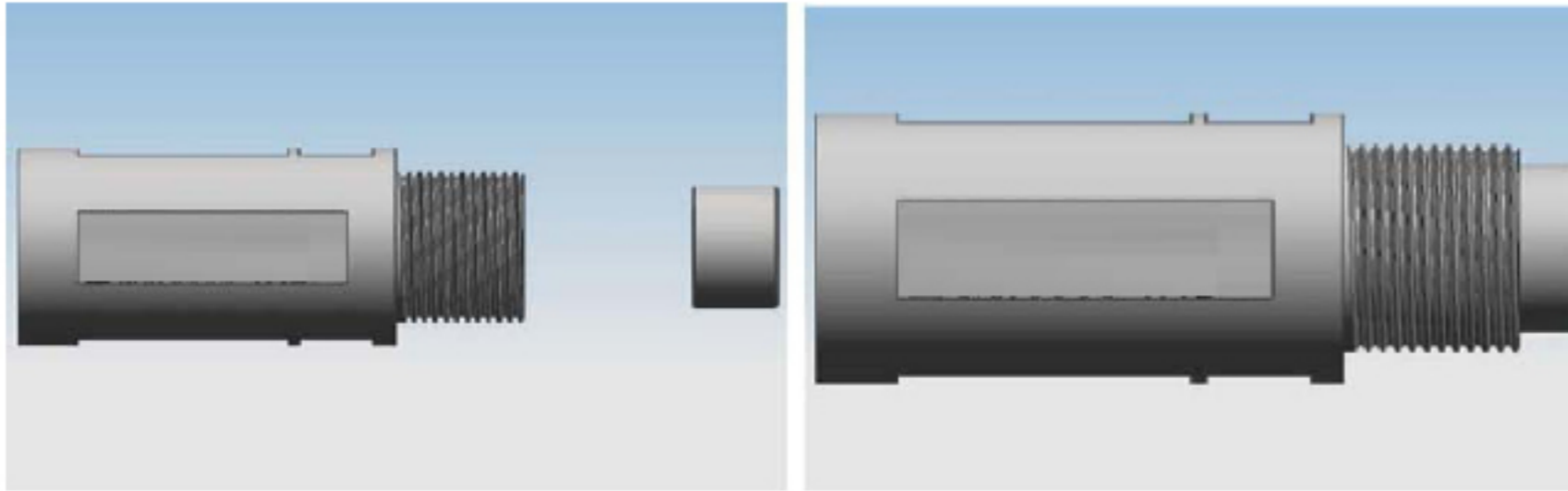


(3)place backshell nut onto the wire.



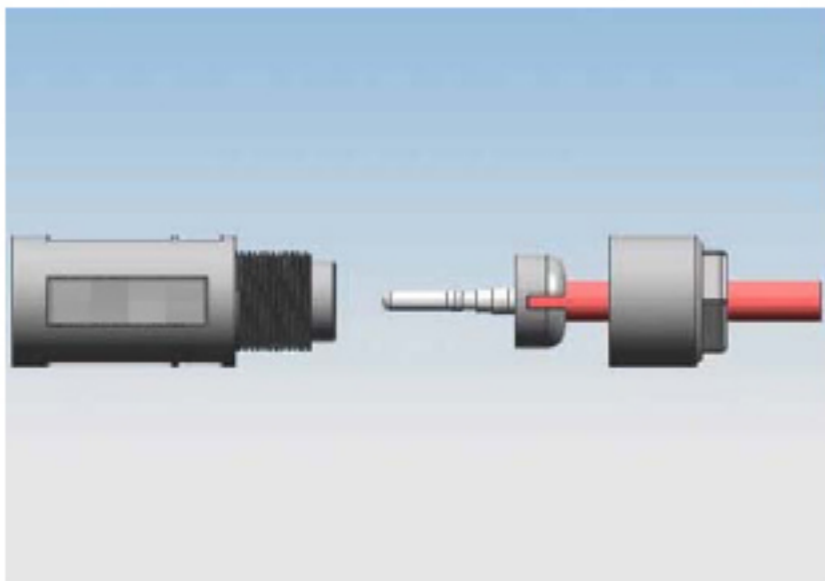
(Fig.3)

(4)press sealing grommet into the connector housing until it stops

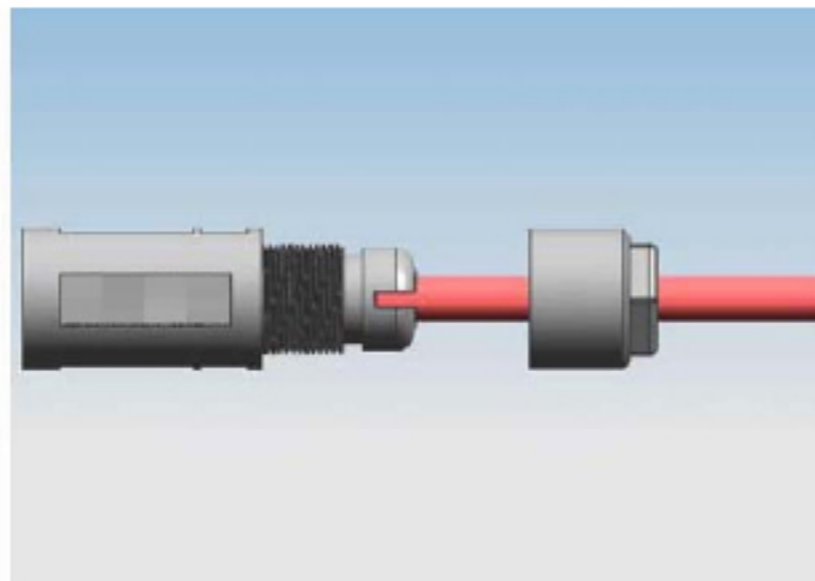


(Fig.4)

(5) Push the strain relief onto the cable and push contact into the connector housing until you hear the contact is locked into position. Slide strain relief over sealing grommet.



(Fig.5)



(Fig.5a)

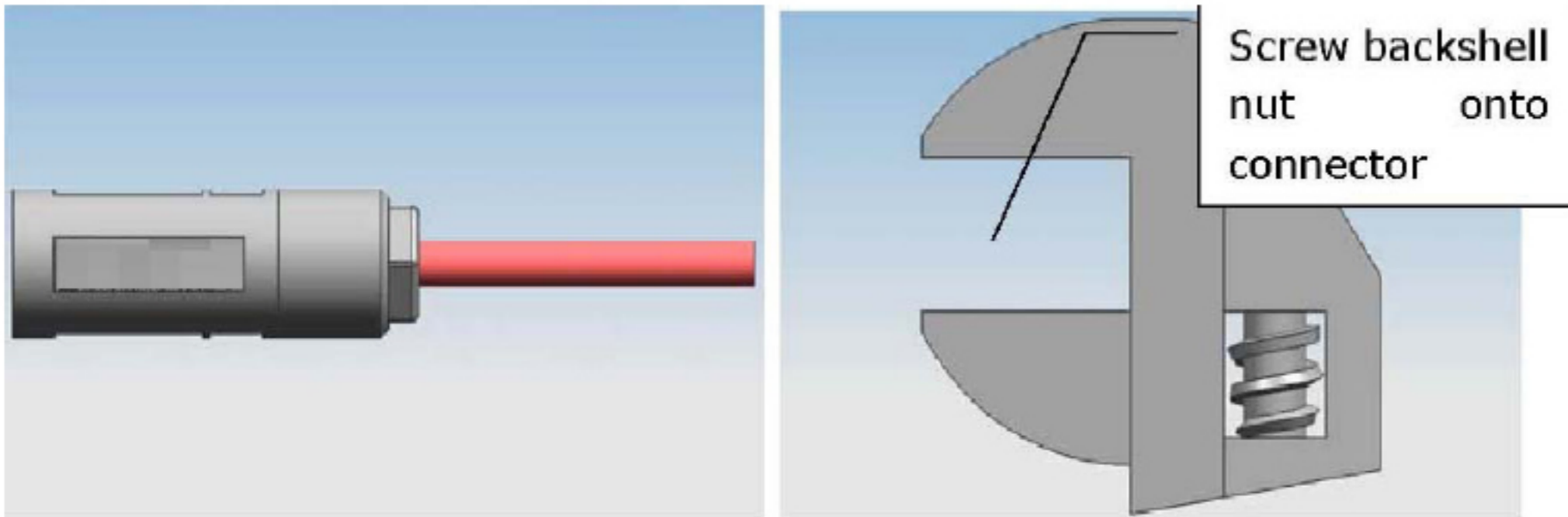
Notice: If you can not push contact Pin into connector housing by hand, Please press contact Pin into housing by screwdriver like Fig.5b.

screwdriver



(Fig.5b)

(6)Screw backshell nut onto connector housing, Tighten backshell nut



(Fig.6)

Connectors labeled with a plus or minus are keyed and could only be mated to similarly marked and keyed connectors. Keying is shown in Figure7. The connector system is fully latched only when the latches are flush with the mating connector. After the connector is fully latched, the optional latch locking clip may be snapped into place.

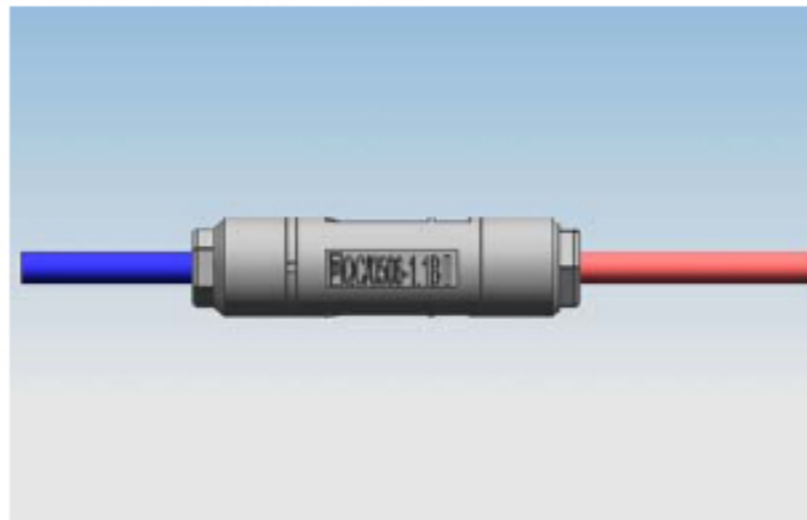


(Fig.7)

CAUTION: This connector must not be disconnected under load. Disconnect circuit from load before unplugging connectors. Cable assemblies must be labeled using Solar label

Unmating of the connector

CAUTION: Do not disconnect under load



(Fig.8)

(1) The locking mechanism is opened by depressing the latches.

(2) Pull out the connectors. While depressing the latches, disconnect the connector by pulling

the connector halves apart. Our company is willing to contribute for the global

environment protect and energy saving causes with the PV products!